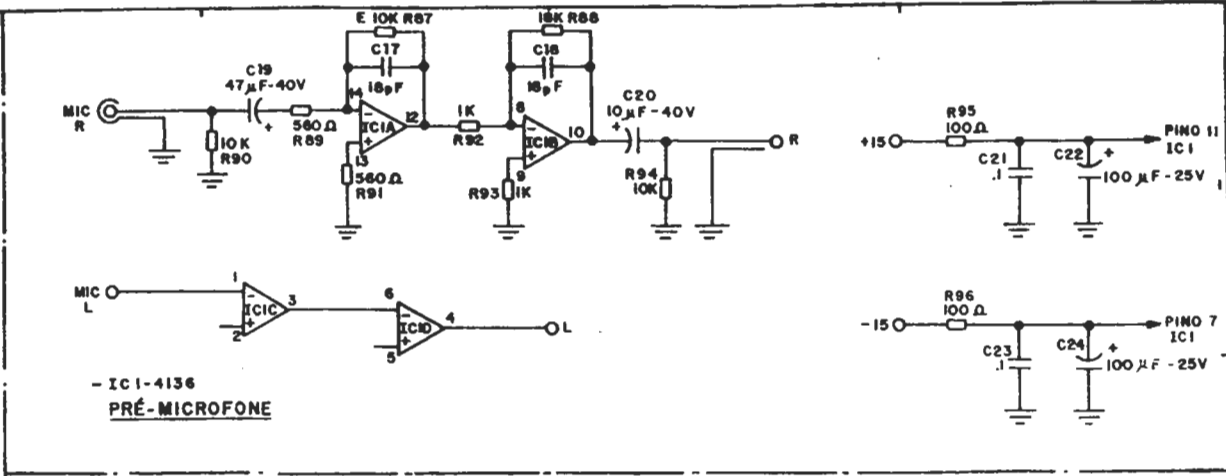
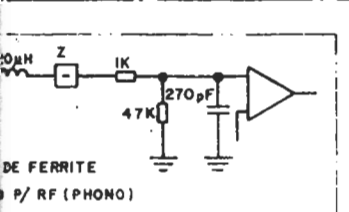
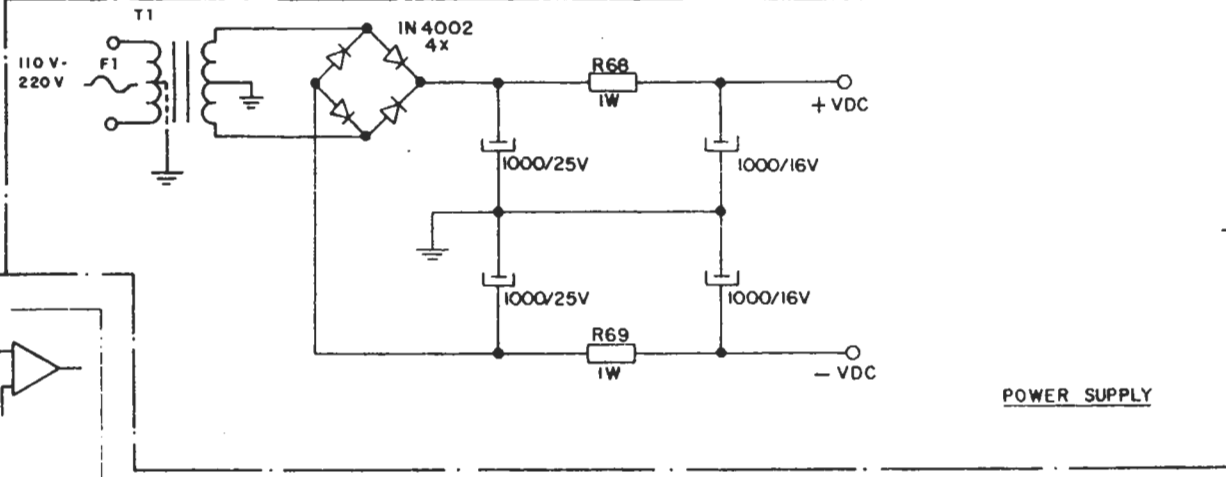


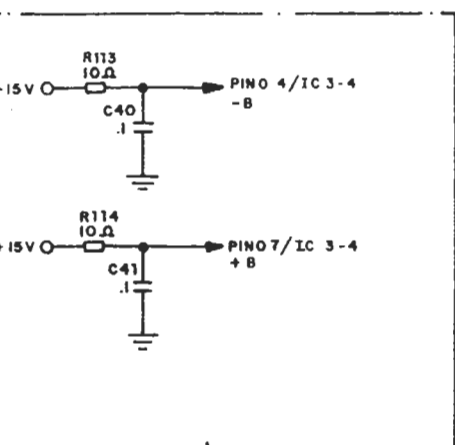
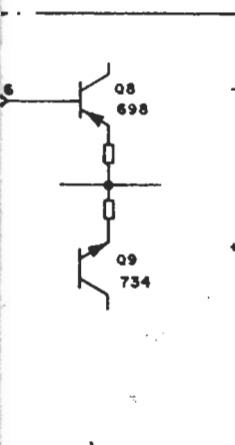
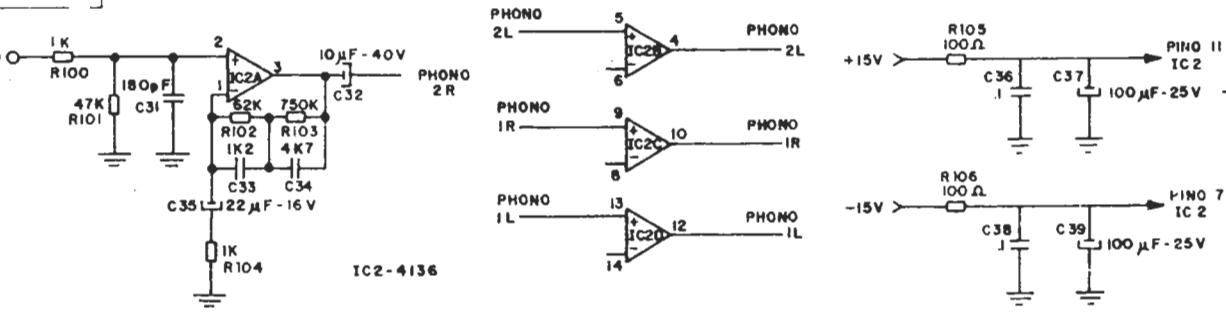
OUT TAPE 1L  
 OUT TAPE 1R  
 OUT TAPE 2L  
 OUT TAPE 2R  
 OUT TAPE 3L  
 OUT TAPE 3R



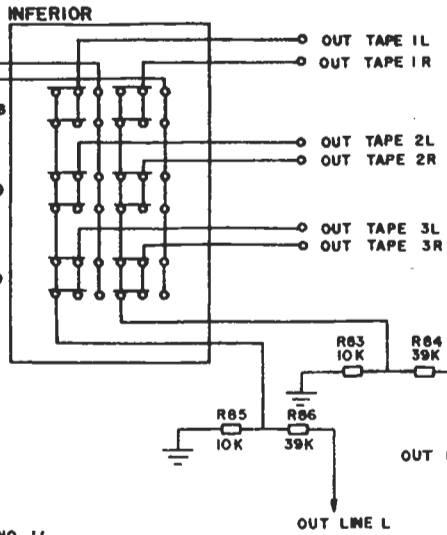
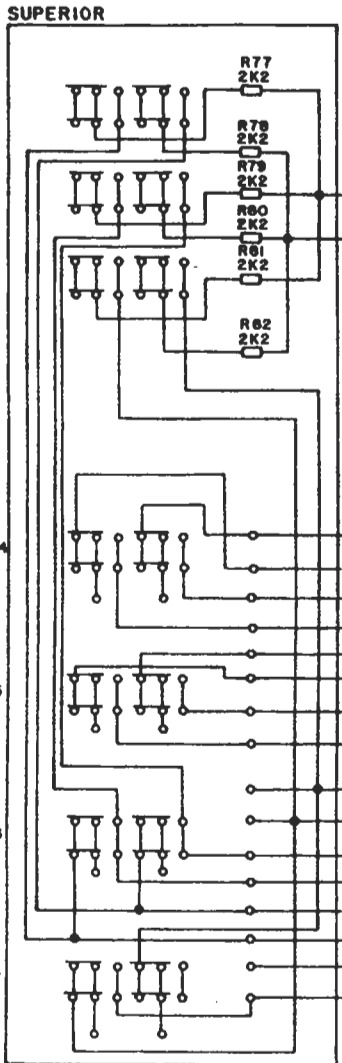
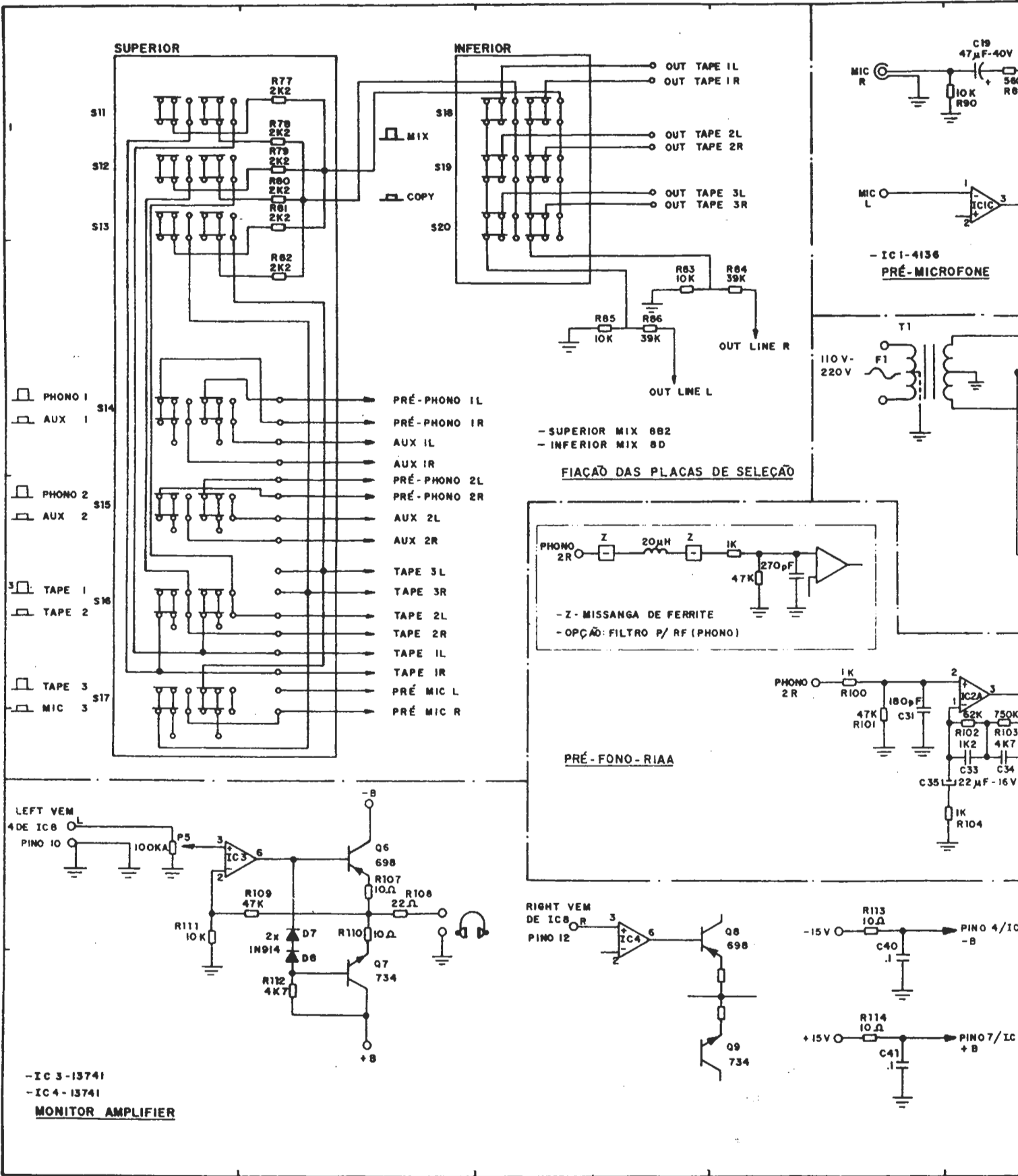
R83 10K R84 39K  
 OUT LINE R  
 OUT LINE L  
 882 8D  
**PLACAS DE SELEÇÃO**



PHONO 2R  
 PHONO 2L  
 PHONO 1R  
 PHONO 1L

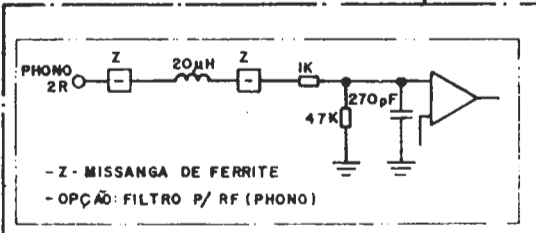


▶▶ [gigi.gomes@uol.com.br](mailto:gigi.gomes@uol.com.br)

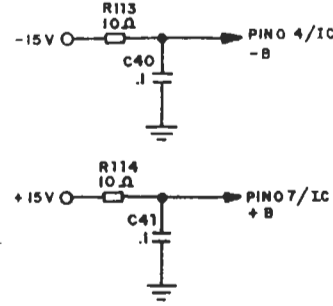
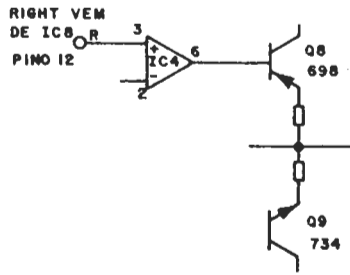
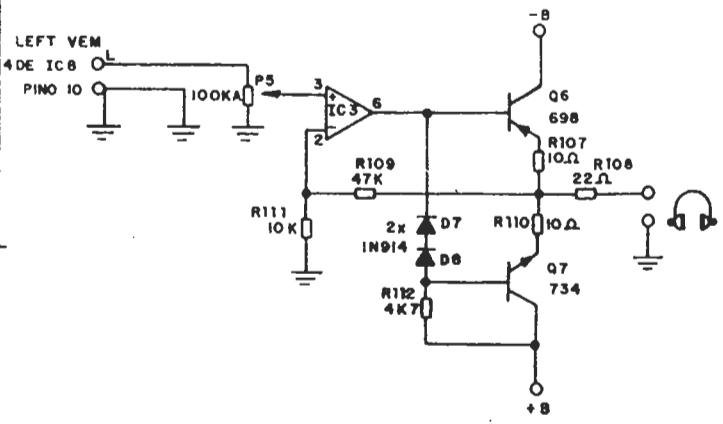
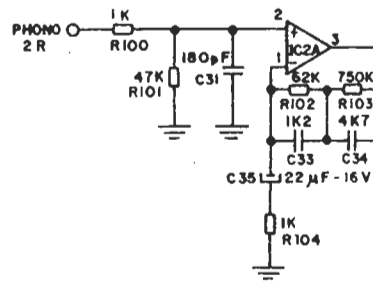


- SUPERIOR MIX 882  
- INFERIOR MIX 8D

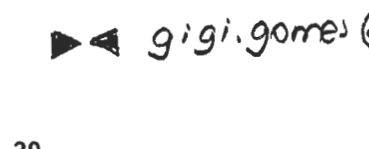
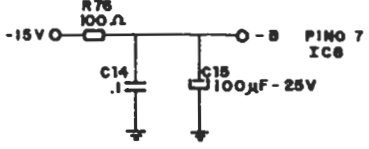
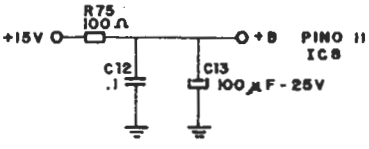
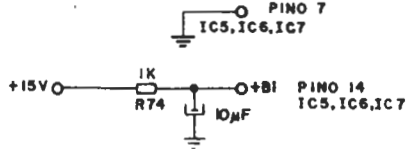
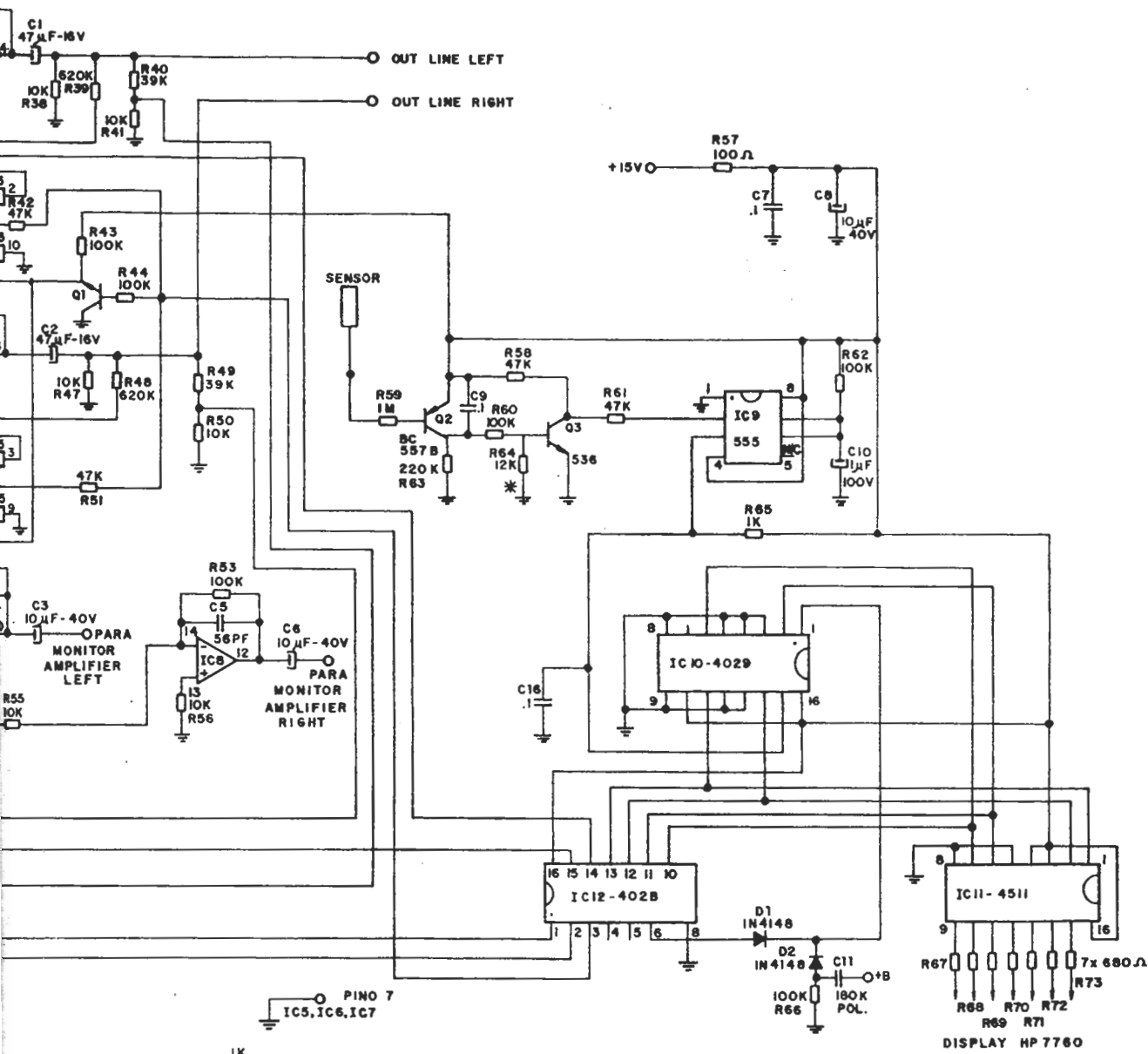
**FIACÃO DAS PLACAS DE SELEÇÃO**



**PRÉ-FONO-RIA**

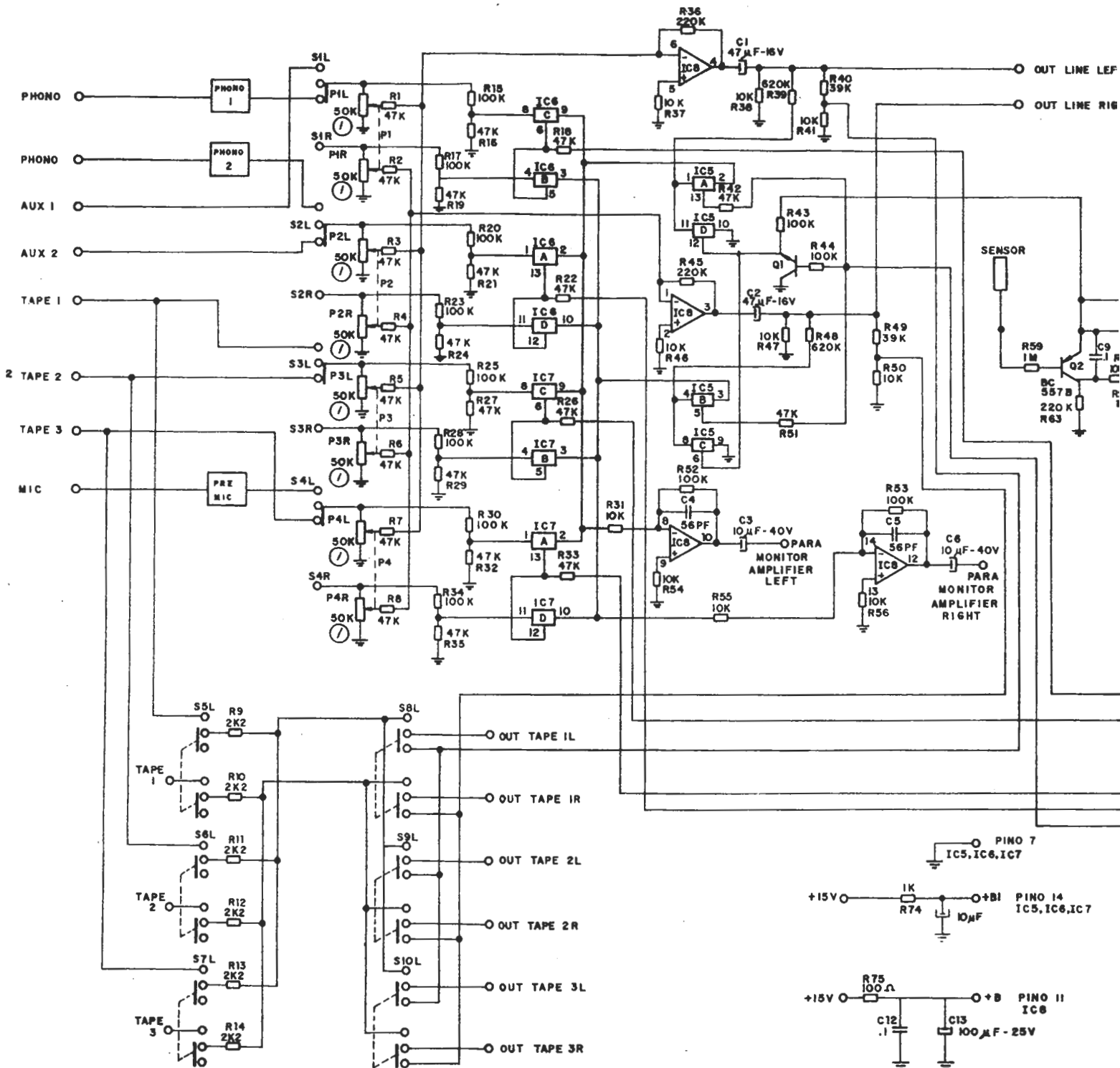


- IC 3 - 13741  
- IC 4 - 13741  
**MONITOR AMPLIFIER**



**OBS.:**  
 IC5, IC6, IC7 - 4066  
 IC8 - 4136  
 \* ACRESCENTADO RESISTOR DE 12K CR25 PARA MELHORA DO SENSOR.

▶◀ [gigi.gomes@vol.com.br](mailto:gigi.gomes@vol.com.br)



gigi.gomes@uol